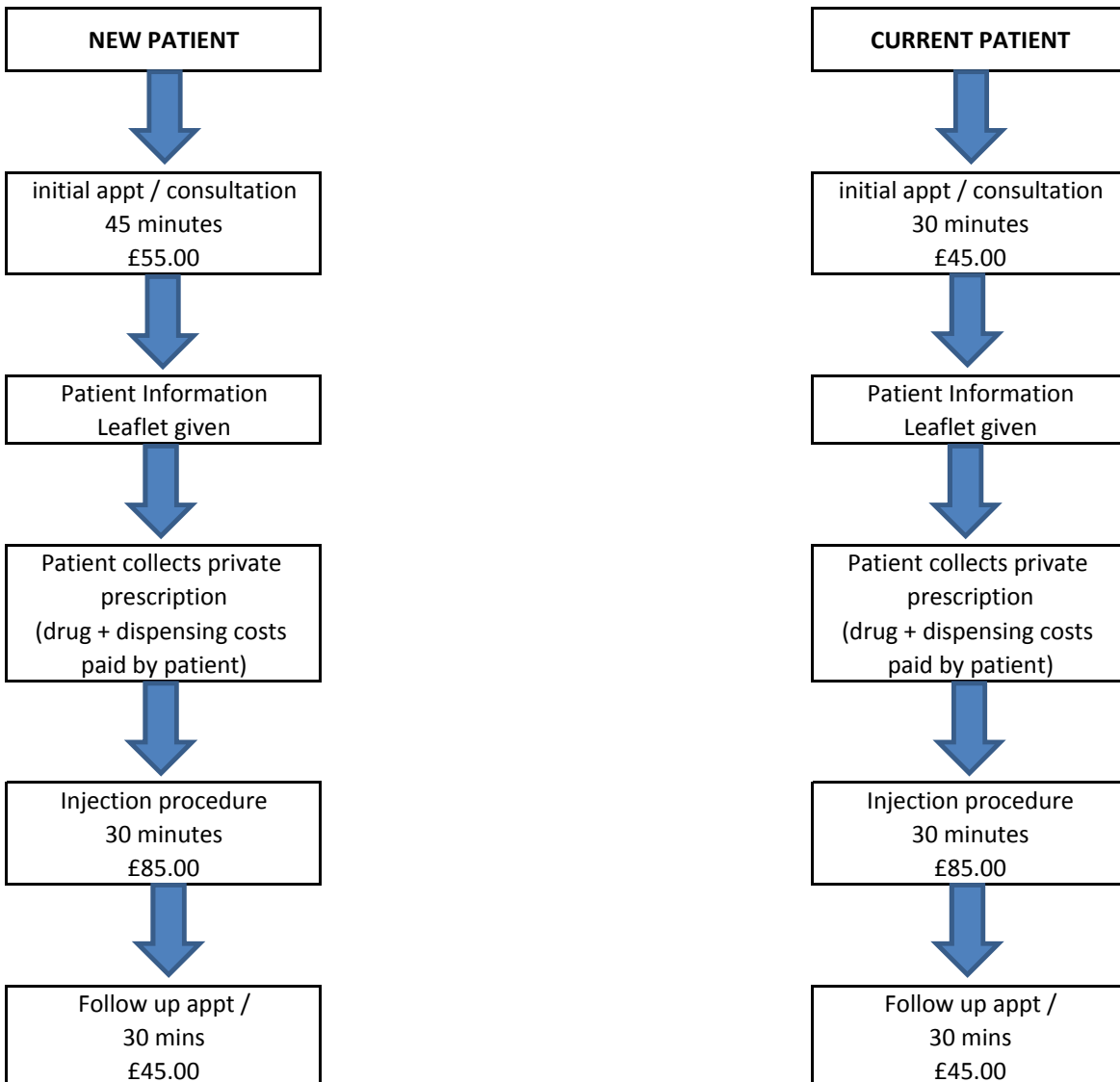


PATIENT INJECTION PATHWAY



If patients are new to the clinic they will require a normal 45 minute assessment for subjective and objective history and assessment.

If patients are currently under treatment with a physiotherapist in the clinic then they will only need to attend a 30 minute assessment as the subjective history will have been completed and a comprehensive handover will have been provided to the injecting specialist.